

Mezzanine Inspection Report (Scoping)

Date: 01/08/2015	Station Name: D02 Smithsonian North	Mezzanine #: 054	Completed By: Zach Fitzwater
Summary			
<p>Video scoping was completed for the communication and power ducts in the faregate arrays. Pull strings were successfully installed in the communication ducts for the faregate arrays. Video scoping was completed and pull string installed in the power duct between the Kiosk , Handhole 1, Handhole 2, Handhole 3 and the AFC Panel.</p> <p>Scanning is not required at this mezzanine.</p>			
Scoping of Faregate Array(s)			
Task	Yes/No	Notes	
Communications Duct – Upper Faregate Array (7 Gates)			
Was video scoping completed for the entire duct run?	Yes	Refer to WMATA Smithsonian North 6inch Upper Comm Videos.avi file.	
Were pull strings installed at all faregates in the array?	Yes		
Were there any obstructions or blockages? Provide details of type and specific location.	No	Minor dust and debris	
Is the duct at capacity? Provide additional details about the dimensions of ducts and number of wires.	No	6" duct less than 10 wires	
Communications Duct - Lower Faregate Array (7 Gates)			
Was video scoping completed for the entire duct run?	Yes	Refer to WMATA Smithsonian North 6inch Lower Comm Videos.avi file.	
Were pull strings installed at all faregates in the array?	Yes		
Were there any obstructions or blockages? Provide details of type and specific location.	No	Minor dust and debris	
Is the duct at capacity? Provide additional details about the dimensions of ducts and number of wires.	No	6" duct less than 10 wires	
Power Duct - Upper Faregate Array (7 Gates)			
Was video scoping completed for the entire duct run?	Yes	Refer to WMATA Smithsonian North 6inch Upper Power to Kiosk Videos.avi file.	
Were there any obstructions or blockages? Provide details of type and specific location.	No	Minor dust and debris	
Is the duct at capacity? Provide additional details about the dimensions of ducts and number of wires.	No	6" duct less than 10 wires	
Power Duct - Lower Faregate Array (7 Gates)			
Was video scoping completed for the entire duct run?	Yes	Refer to WMATA Smithsonian North 6inch Lower Power to Kiosk Videos.avi file.	
Were there any obstructions or blockages? Provide details of type and specific location.	No	Minor dust and debris	
Is the duct at capacity? Provide additional details about the dimensions of ducts and number of wires.	No	6" duct less than 10 wires	

Scoping of Power Duct - Kiosk to AFC Panel		
Task	Yes/No	Notes
Kiosk to Handhole 1 (5')		
Was video scoping completed for the entire duct / conduit run?	Yes	
Was pull string installed?	Yes	
Were there any obstructions or blockages? Provide details of type and specific location.	No	Minor dust and debris
Is the duct / conduit at capacity? Provide additional details about the dimensions of duct / conduit and number of wires.	No	6" duct – wires congested at small handhole openings, but there is room inside the ducts
Handhole 1 to Handhole 2 (45')		
Was video scoping completed for the entire duct / conduit run?	Yes	Tangle of wires at handhole 2 prevented last 1' of scope. Refer to WMATA Smithsonian North Power HH1 to HH2 Videos.avi file.
Was pull string installed?	Yes	
Were there any obstructions or blockages? Provide details of type and specific location.	No	Minor dust and debris
Is the duct / conduit at capacity? Provide additional details about the dimensions of duct / conduit and number of wires.	No	6" duct – wires congested at small handhole openings, but there is room inside the ducts
Handhole 2 to Handhole 3 (45')		
Was video scoping completed for the entire duct / conduit run?	Yes	Tangle of wires at handhole 2 prevented last 1' of scope. Refer to WMATA Smithsonian North Power HH3 to HH2 to HH3 to AFC Videos.avi file.
Was pull string installed?	Yes	
Were there any obstructions or blockages? Provide details of type and specific location.	No	Minor dust and debris
Is the duct / conduit at capacity? Provide additional details about the dimensions of duct / conduit and number of wires.	No	6" duct – wires congested at small handhole openings, but there is room inside the ducts
Handhole 3 to AFC Panel (25')		
Was video scoping completed for the entire duct / conduit run?	Yes	Refer to WMATA Smithsonian North Power HH3 to HH2 to HH3 to AFC Videos.avi file.
Was pull string installed?	Yes	
Were there any obstructions or blockages? Provide details of type and specific location.	No	Minor dust and debris
Is the duct / conduit at capacity? Provide additional details about the dimensions of duct / conduit and number of wires.	No	6" duct – wires congested at small handhole openings, but there is room inside the ducts
Observations / Issues / Next Steps		
<p>Small handhole entries make wires crowded at handholes, but there is room inside the duct for more wires and ducts are fairly clean and unhindered.</p> <p>Total run from Kiosk to AFC panel = 120'</p>		
Sign Off		
	GFP Representative	WMATA PRGM
Name:	Zach Fitzwater	
Signature:		
Date:	01/08/2015	

Photo #1 – D02 Smithsonian North: Kiosk to handhole 1

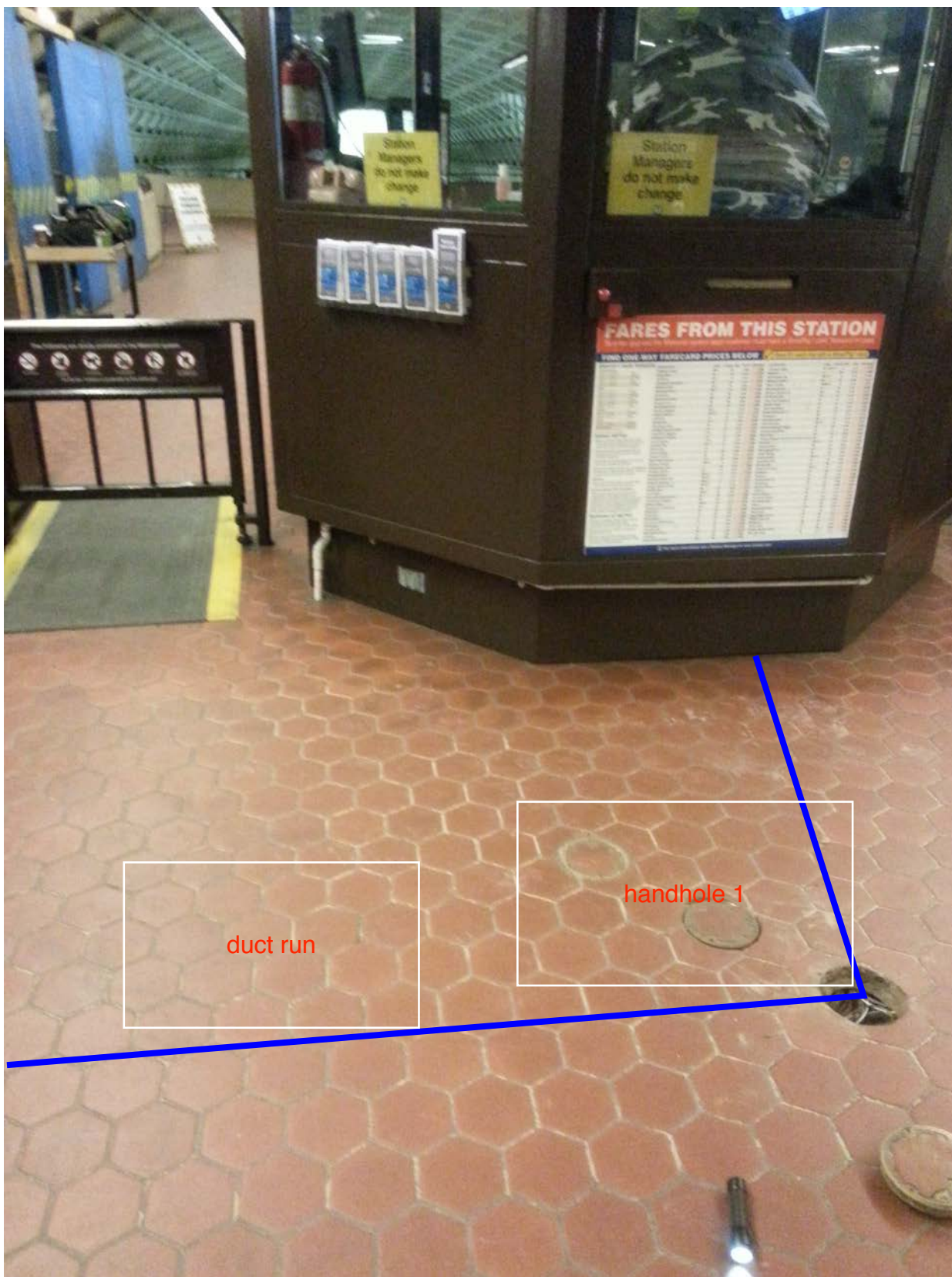


Photo #2 – D02 Smithsonian North: Handhole 1 to handhole 2

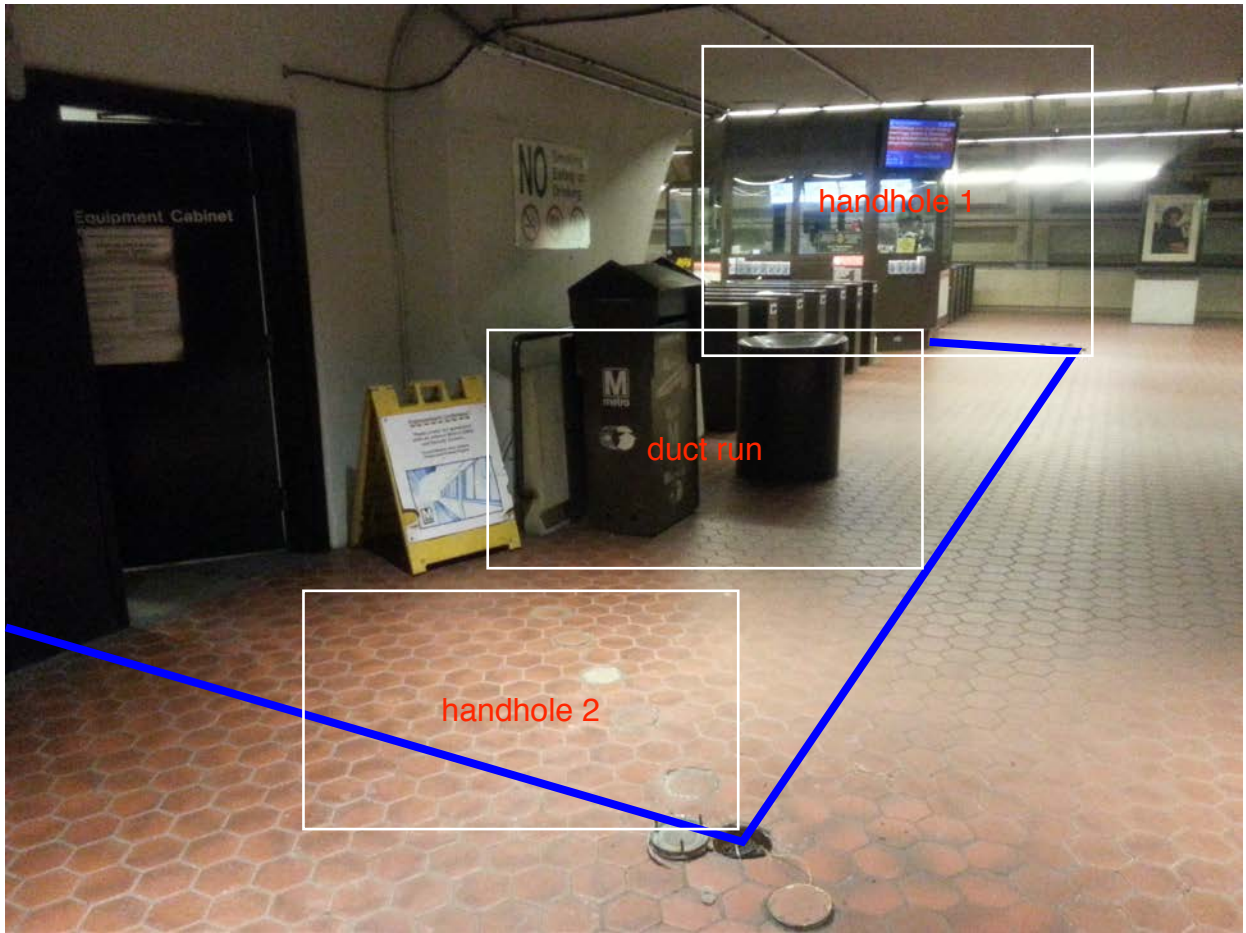


Photo #3 – D02 Smithsonian North: Handhole 2 to handhole 3

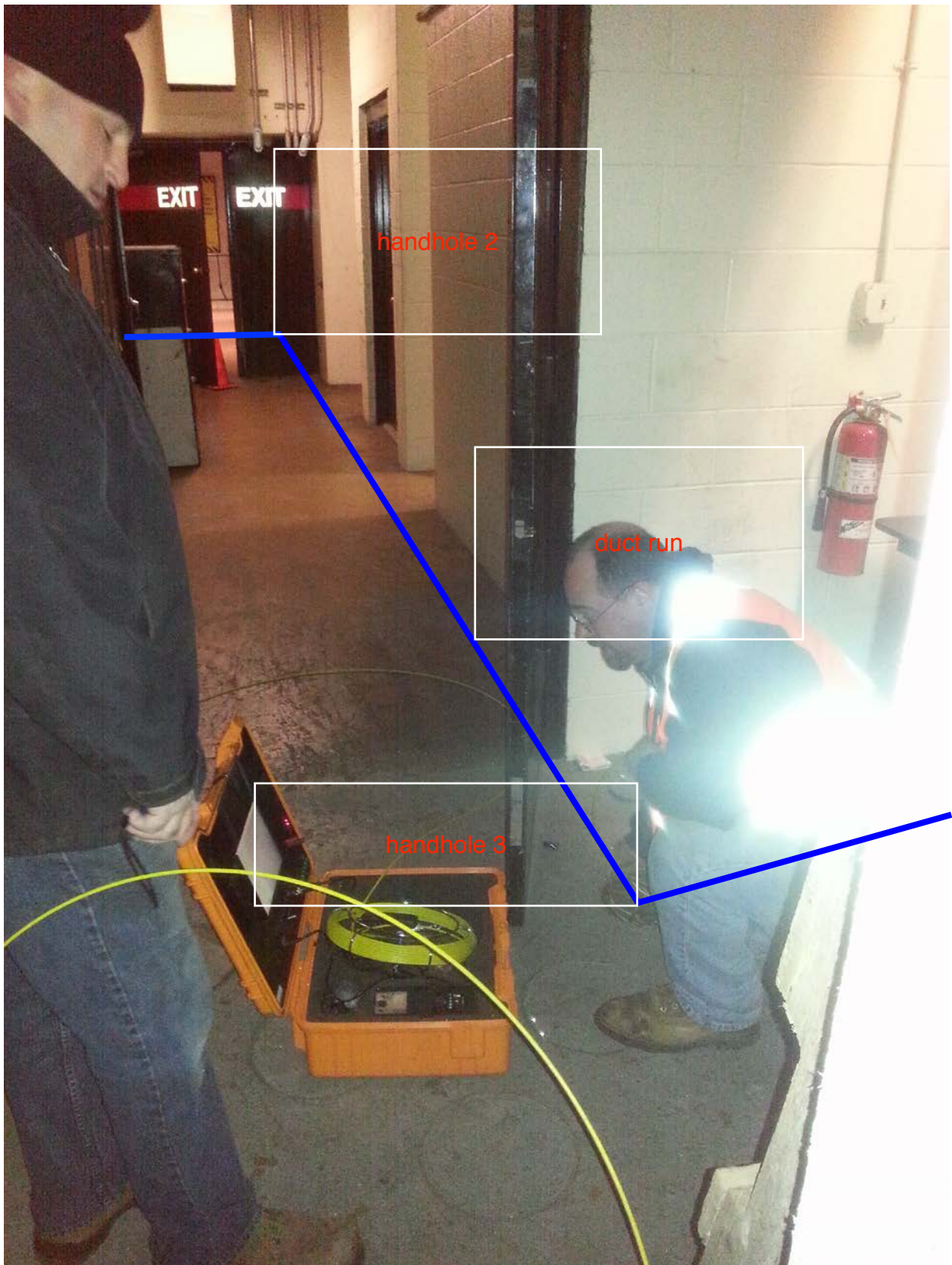
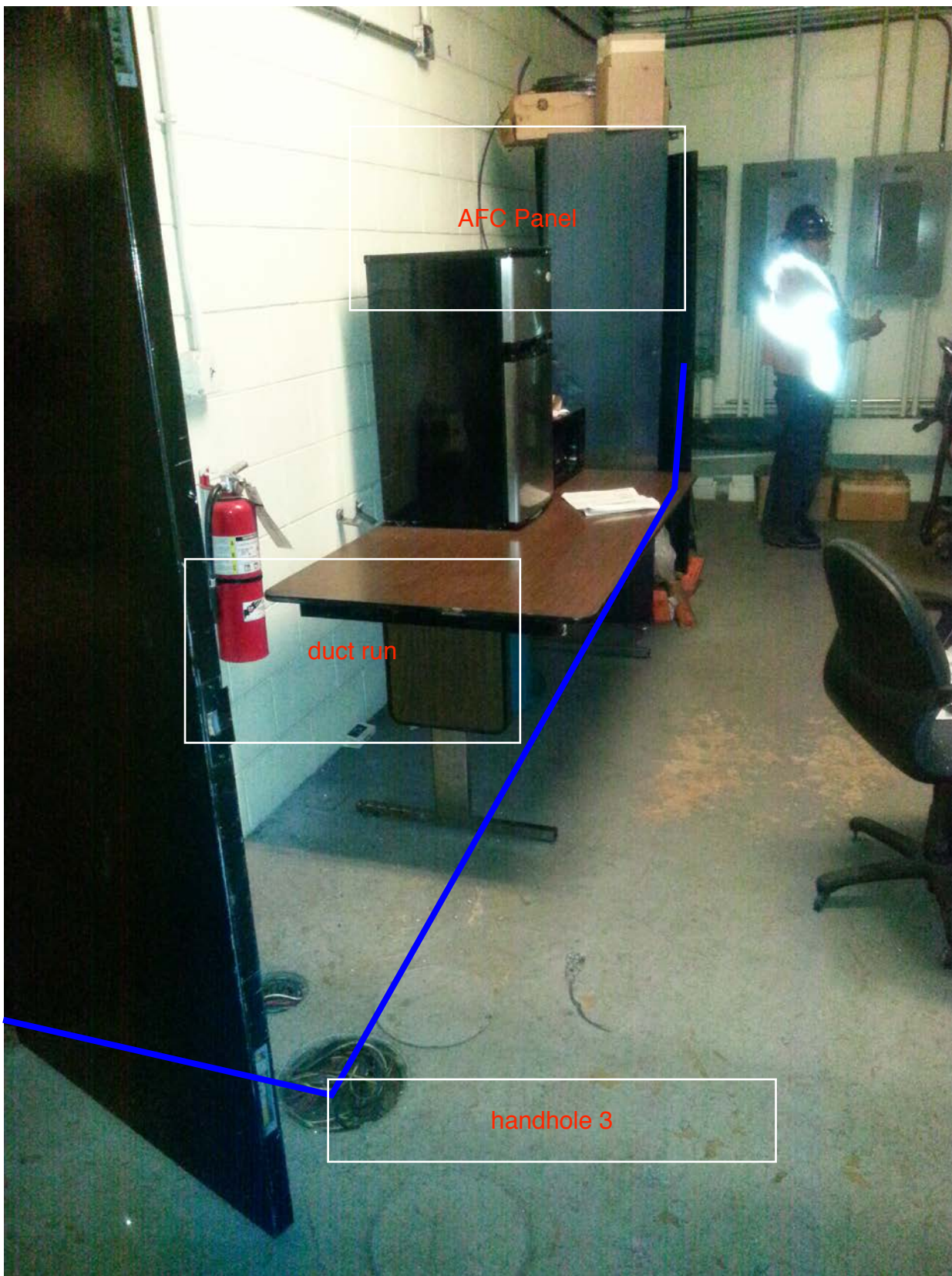


Photo #4 – D02 Smithsonian North: Handhole 3 to AFC panel



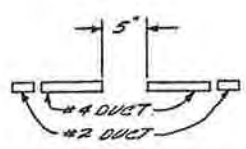
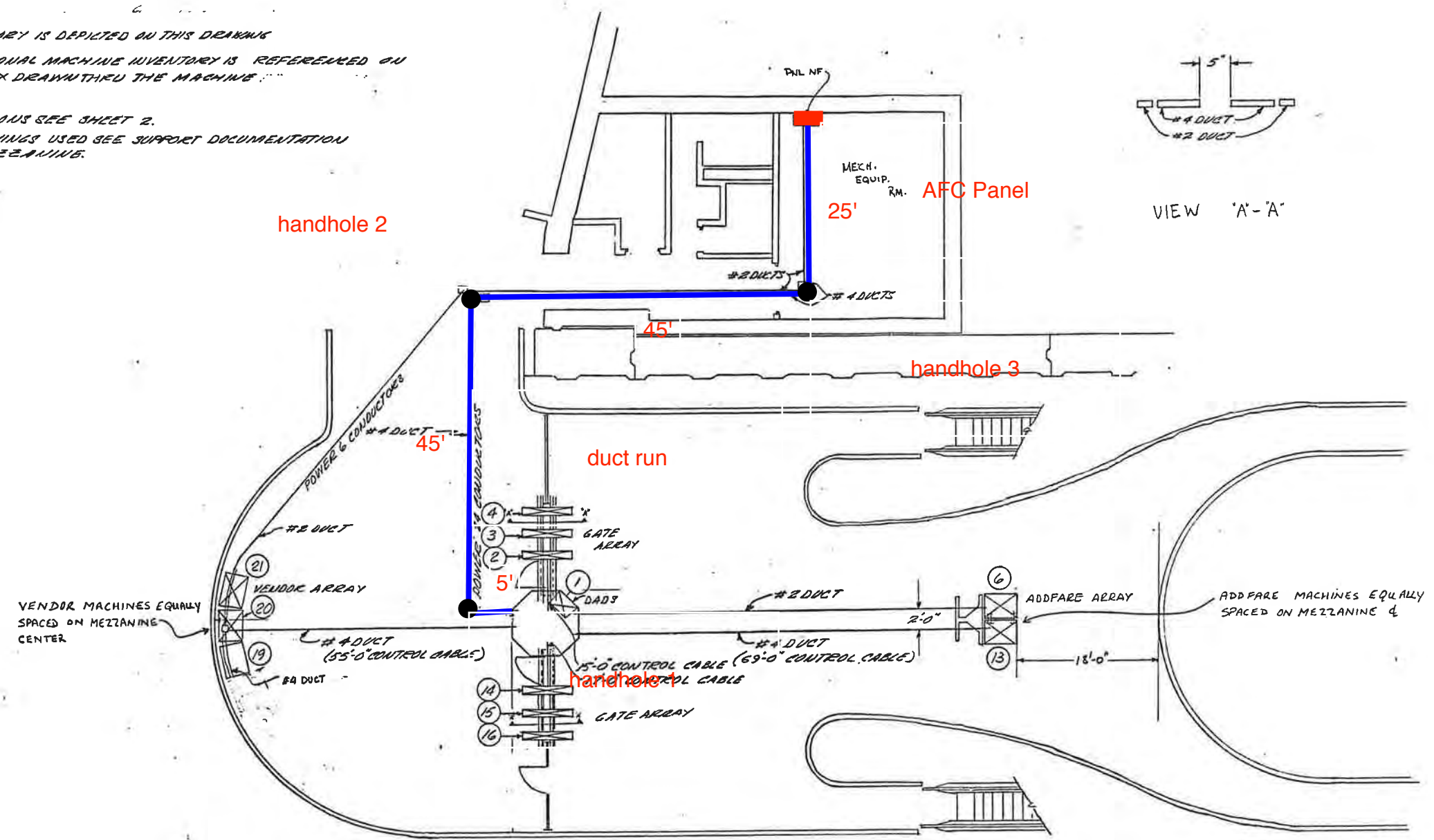
NOTES:

ALL INFORMATION CONCERNING DUCTS AND CONDUITS IS BASED ON INFORMATION SUPPLIED TO CUBIC WESTERN DATA BY BECHTEL.

TOTAL MACHINE INVENTORY IS DEPICTED ON THIS DRAWING. THE MINIMUM OPERATIONAL MACHINE INVENTORY IS REFERENCED ON THIS DRAWING BY THE 'X' DRAWN THRU THE MACHINE.

FOR AS BUILT CONDITIONS SEE SHEET 2. FOR REFERENCE DRAWINGS USED SEE SUPPORT DOCUMENTATION PACKAGE FOR THIS MEZZANINE.

REVISIONS		
DESCRIPTION	DATE	APVD
AS BUILT DRAWING REFERENCE A	7-13-77	JFB



-1 INSTALLATION PLAN
(AS BUILT CONDITION)

CONTRACT NUMBER 22007A		 A subsidiary of Cubic Corporation 3650 KEARNY MESA ROAD • POST OFFICE BOX 80787 • SAN DIEGO, CA 92138	
REL _____ ENGRG _____ DESIGN _____ CHECK _____ DRAWN _____		SMITHSONIAN STATION NORTH MEZZANINE AFC MACHINES	
DESIGN ACTIVITY APPROVAL Mark D. Powell 8-5-76	SIZE D	DRAWING NUMBER 926-0384	REV 5
APPROVED [Signature] 11/2/76	SCALE 1/8" = 1'-0"	SHEET 1 OF 2	

Mezzanine Inspection Report (Scoping)

Date: 01/07/15	Station Name: D02 Smithsonian South	Mezzanine #: 055	Completed By: Zach Fitzwater
Summary			
<p>Scoping and pull sting installation completed for all communication ducts for the faregate arrays. Video scoping completed for power ducts for faregate arrays and duct run from kiosk to trough box in Mechanical Equipment Room #214. Pull string was already installed in power duct from kiosk to handhole 1, and from handhole 1 to the trough box. Pull string was installed in overhead conduit run from trough box to AFC Panel.</p> <p>Scanning is not required at this mezzanine.</p>			
Scoping of Faregate Array(s)			
Task	Yes/No	Notes	
Communications Duct – Upper Faregate Array (5 Gates)			
Was video scoping completed for the entire duct run?	Yes	Refer to WMATA Smithsonian South 6inch Upper Comm Video.avi file.	
Were pull strings installed at all faregates in the array?	Yes		
Were there any obstructions or blockages? Provide details of type and specific location.	No	Minor dust and debris	
Is the duct at capacity? Provide additional details about the dimensions of ducts and number of wires.	No	6" duct less than 10 wires	
Communications Duct - Lower Faregate Array (5 Gates)			
Was video scoping completed for the entire duct run?	Yes	Refer to WMATA Smithsonian South 3inch Lower Comm Video.avi and WMATA Smithsonian South 6inch Lower Comm Video.avi files.	
Were pull strings installed at all faregates in the array?	Yes		
Were there any obstructions or blockages? Provide details of type and specific location.	No	Minor dust and debris	
Is the duct at capacity? Provide additional details about the dimensions of ducts and number of wires.	No	6" duct less than 10 wires	
Power Duct - Upper Faregate Array (5 Gates)			
Was video scoping completed for the entire duct run?	Yes	Refer to WMATA Smithsonian South 6inch Upper Power Video.avi file.	
Were there any obstructions or blockages? Provide details of type and specific location.	No	Minor dust	
Is the duct at capacity? Provide additional details about the dimensions of ducts and number of wires.	No	6" duct less than 10 wires	
Power Duct - Lower Faregate Array (5 Gates)			
Was video scoping completed for the entire duct run?	Yes	Refer to WMATA Smithsonian South 6inch Lower Power Video.avi file.	
Were there any obstructions or blockages? Provide details of type and specific location.	No	Minor dust and debris	
Is the duct at capacity? Provide additional details about the dimensions of ducts and number of wires.	No	3" duct less than 10 wires	


Scoping of Power Duct - Kiosk to AFC Panel		
Task	Yes/No	Notes
Kiosk to Handhole 1 (90 foot run)		
Was video scoping completed for the entire duct / conduit run?	Yes	Refer to WMATA Smithsonian South 6inch Power Handhole to Kiosk Video.avi file.
Was pull string installed?	Yes	Pull string already installed in run
Were there any obstructions or blockages? Provide details of type and specific location.	No	Minor dust
Is the duct / conduit at capacity? Provide additional details about the dimensions of duct / conduit and number of wires.	No	6" duct less than 10 wires
Handhole 1 to Trough box (20 foot run)		
Was video scoping completed for the entire duct / conduit run?	Yes	Refer to WMATA Smithsonian South 6inch Power Handhole to Trough Video.avi file.
Was pull string installed?	Yes	Pull string already installed in run
Were there any obstructions or blockages? Provide details of type and specific location.	No	
Is the duct / conduit at capacity? Provide additional details about the dimensions of duct / conduit and number of wires.	No	6" duct less than 10 wires
Trough box to AFC Panel (40 foot run)		
Was video scoping completed for the entire duct / conduit run?	No	Conduit – scoping not required
Was pull string installed?	Yes	
Were there any obstructions or blockages? Provide details of type and specific location.	No	
Is the duct / conduit at capacity? Provide additional details about the dimensions of duct / conduit and number of wires.	No	2" conduit less than 10 wires
Observations / Issues / Next Steps		
Total run from Kiosk to AFC Panel is 150 feet.		
Sign Off		
	GFP Representative	WMATA PRGM
Name:	Zach Fitzwater	
Signature:		
Date:	01/07/15	

Photo #1 – D02 Smithsonian South: Kiosk to Handhole 1

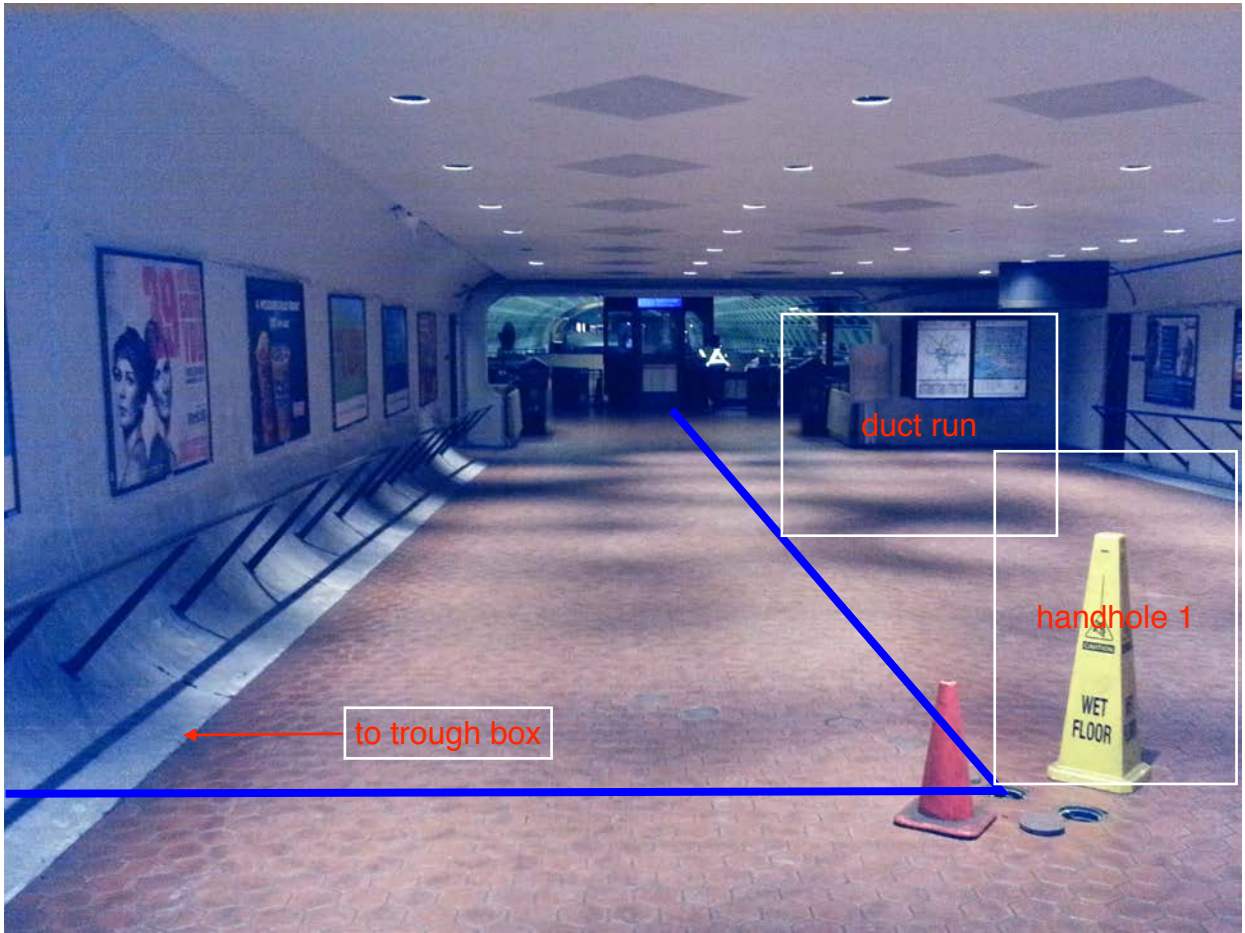


Photo #2 – D02 Smithsonian South: Trough box with overhead conduit leading to AFC panel

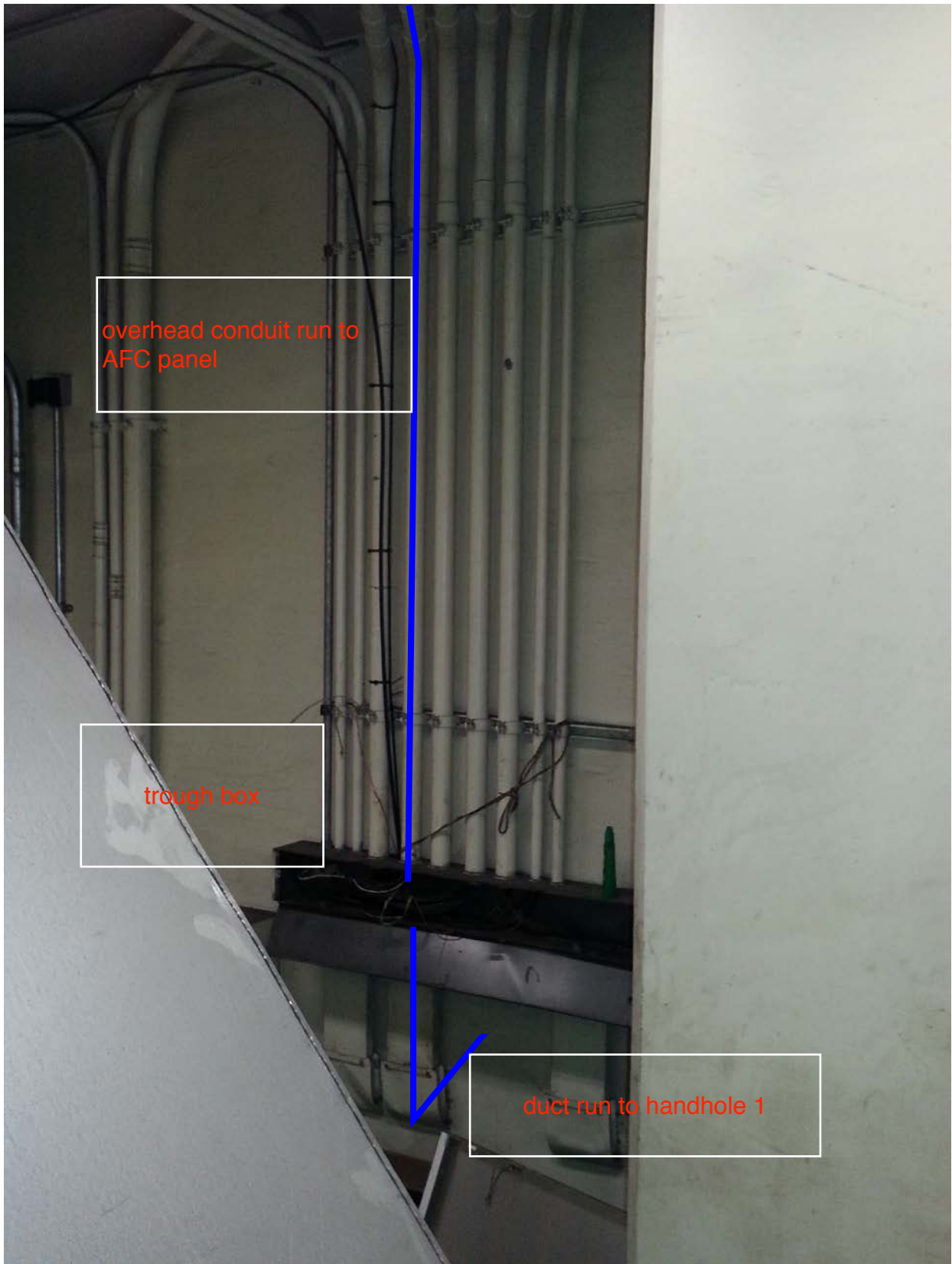
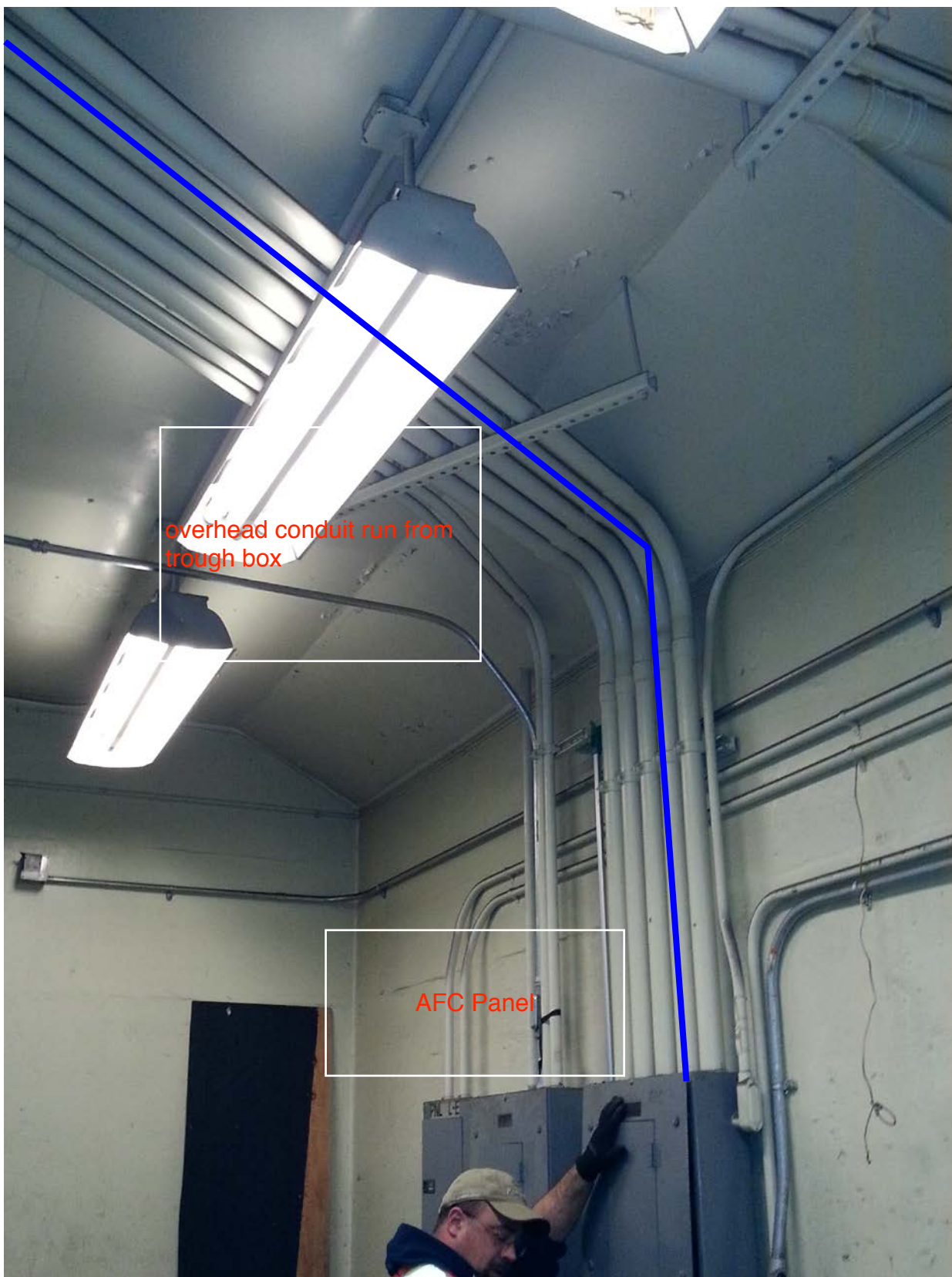


Photo #3 – D02 Smithsonian South: Conduit run to AFC panel



overhead conduit run from trough box

AFC Panel

NOTES:

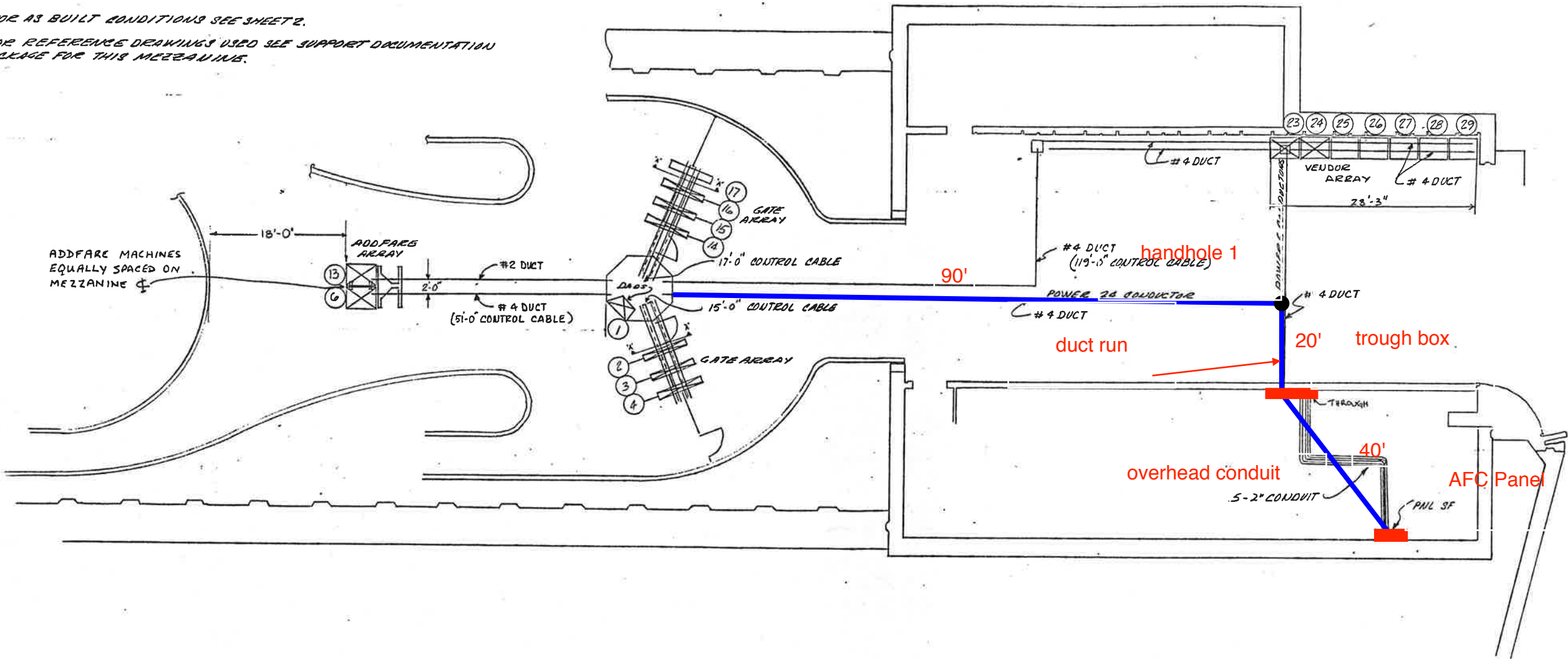
ALL INFORMATION CONCERNING DUCTS AND CONDUITS IS BASED ON INFORMATION SUPPLIED TO CUBIC WESTERN DATA BY WMATA

TOTAL MACHINE INVENTORY IS DEPICTED ON THIS DRAWING
THE MINIMUM OPERATIONAL MACHINE INVENTORY IS REFERENCED ON THIS DRAWING BY THE X DRAWN THRU THE MACHINE

FOR AS BUILT CONDITIONS SEE SHEET 2.

FOR REFERENCE DRAWINGS USED SEE SUPPORT DOCUMENTATION PACKAGE FOR THIS MEZZANINE.

REVISIONS		
DESCRIPTION	DATE	APVD
AS.BUILT DRAWING REVISION A	7-13-77	CFB



- 2 INSTALLATION PLAN
(AS BUILT CONDITION)

REFERENCE DRAWINGS USED

WMATA REF. SK#	SK# 770, 779
WMATA REF. DWG #	N65 98
CWD REF DWG #	926-0319
CWD REF DWG	926-0329 SH 344
DDTC	26227

CONTRACT NUMBER 22007A		 A subsidiary of Cubic Corporation 5850 KEARNY MEESA ROAD • POST OFFICE BOX 80787 • SAN DIEGO, CA 92138	
REL _____ ENGRG _____ DESIGN _____ CHECK _____ DRAWN _____		SMITHSONIAN STATION SOUTH MEZZANINE AFC MACHINES	
DESIGN ACTIVITY APPROVAL [Signature] 2-5-76 APPROVED 11/1/76	SIZE	DRAWING NUMBER 926-0384	REV 55
SCALE 1/4" = 1'-0"		SHEET 2 OF 2	